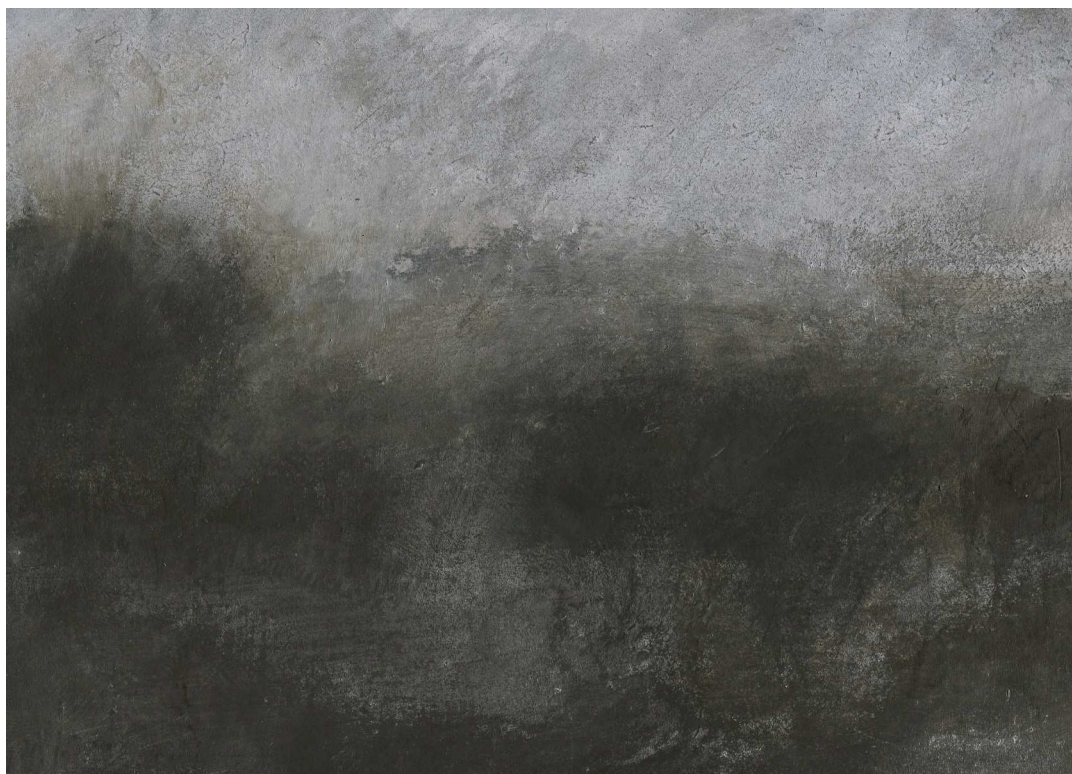


NICHOLAS HERBERT  
SILENT SPACES



ALAN KLUCKOW FINE ART



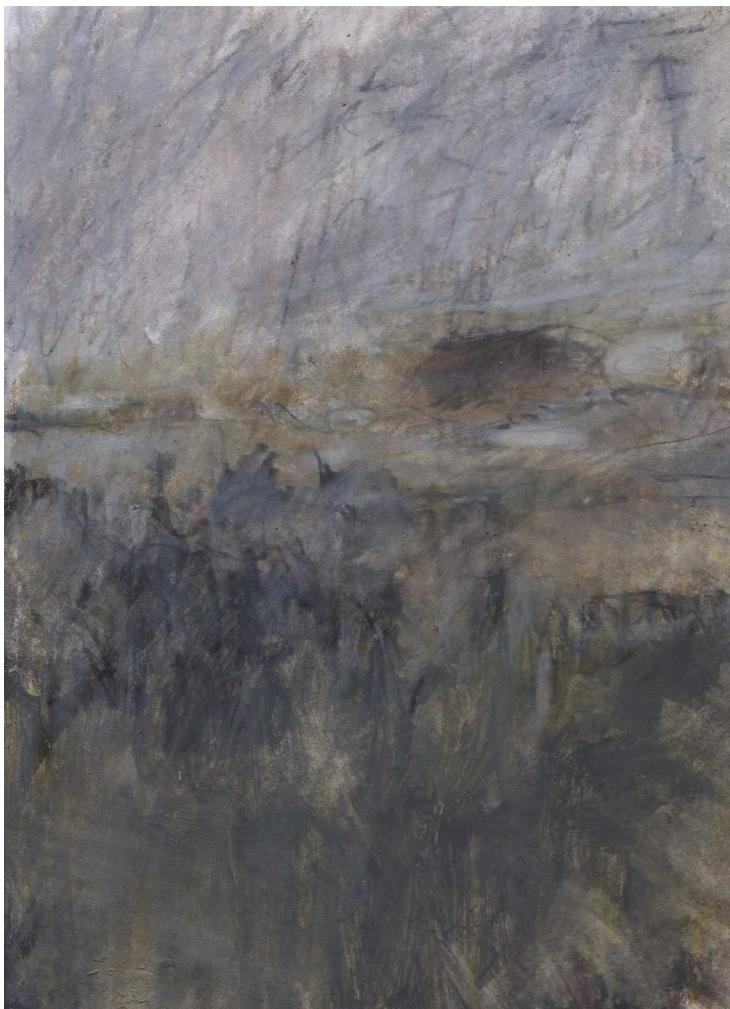
NICHOLAS HERBERT  
SILENT SPACES

Alan Kluckow Fine Art, 16th April - 10th May 2016

ALAN KLUCKOW FINE ART







**Landscape L671**

View to a Distant Hilltop, The Chiltern Hills

13 x 18 cm (5.12 x 7.08 in)



**Landscape L680**

View Across the English Countryside, The Chiltern Hills  
18 x 20 cm (7.08 x 7.87 in)



**Landscape L701**  
Distant Rainstorm, The Chiltern Hills  
18 x 13 cm (7.08 x 5.12 in)



**Landscape L708**

Wooded Valley and Hillside, The Chiltern Hills  
20.8 x 14.8 cm (8.19 x 5.83 in)

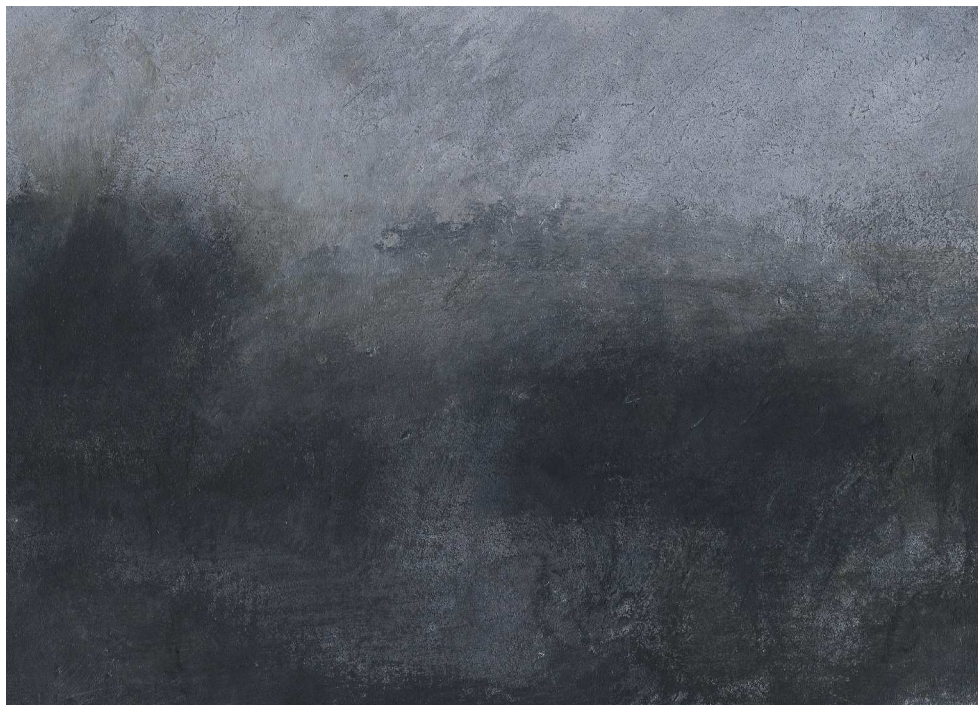




**Landscape L723**  
The Chiltern Hills  
20.8 x 14.8 cm (8.19 x 5.83 in)



**Landscape L724**  
The Chiltern Hills  
24.4 x 13.5 cm (7.61 x 5.31 in)

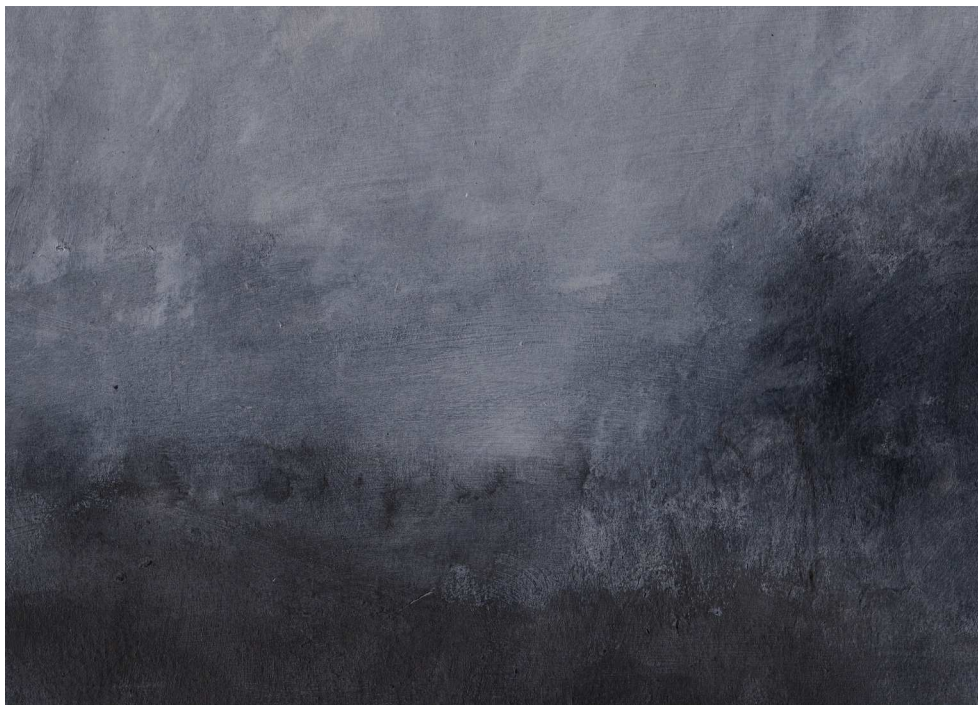


**Landscape L730**

Looking Towards Bison Hill from near Ivinghoe Beacon,  
The Chiltern Hills

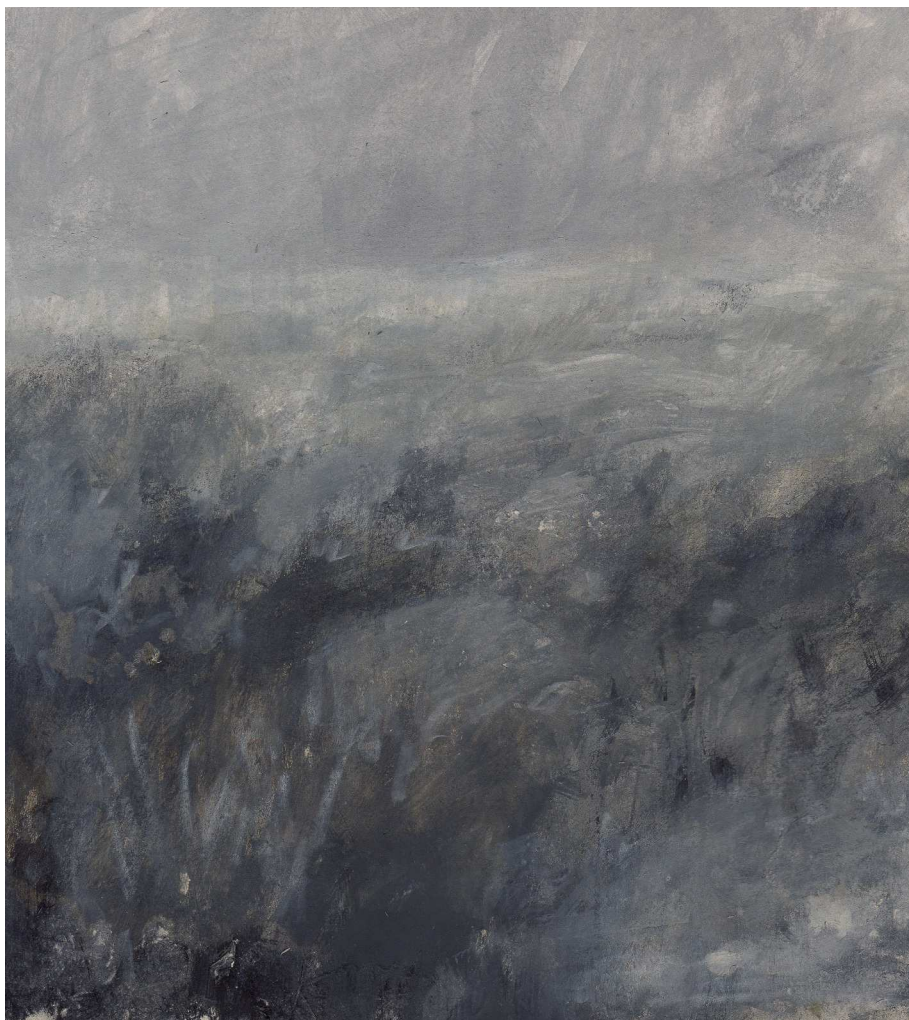
18 x 13 cm (7.08 x 5.12 in)





**Landscape L732**  
The Chiltern Hills  
18 x 13 cm (7.08 x 5.12 in)





**Landscape L753**

Looking out from The Ashridge Estate, The Chiltern Hills  
18 x 20 cm (7.08 x 7.87 in)

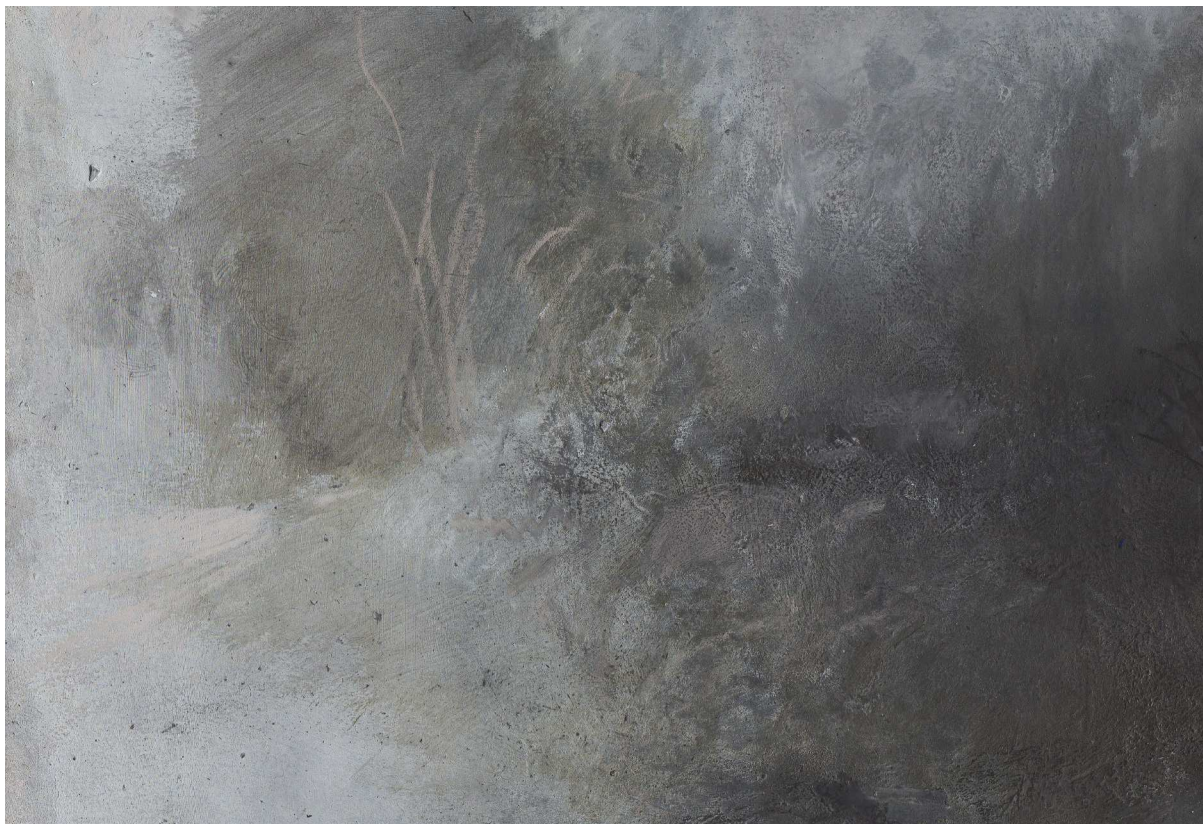


**Landscape L763**  
The Chiltern Hills  
21 x 13.6 cm (8.27 x 5.35 in)

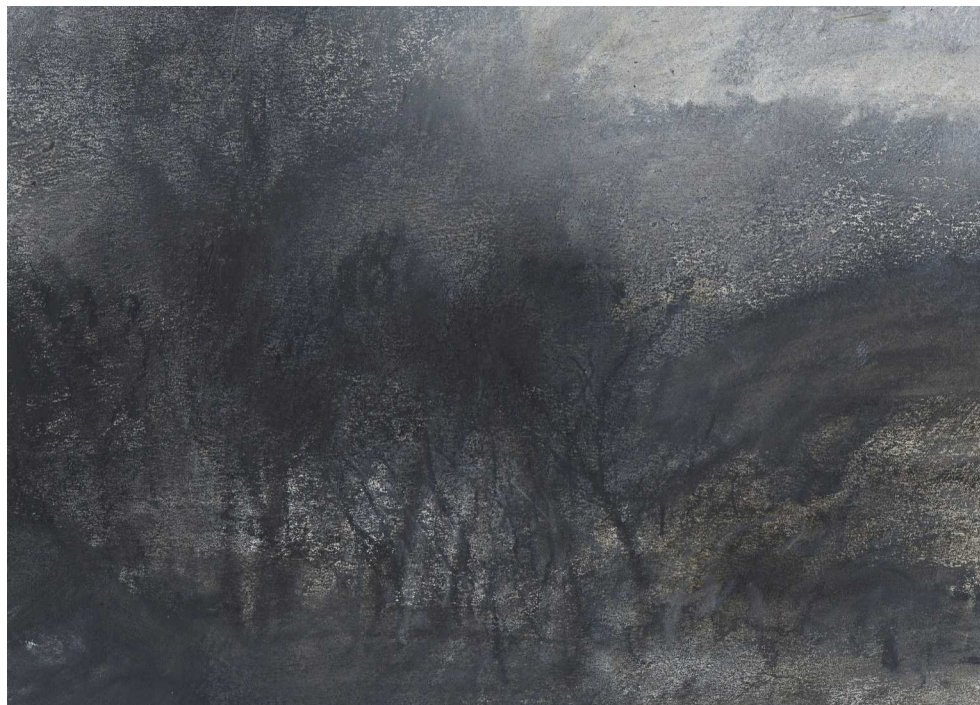


**Landscape L775**  
The Chiltern Hills  
18 x 13 cm (7.08 x 5.12 in)





**Landscape L778**  
The Chiltern Hills  
20 x 14.9 cm (7.84 x 5.87 in)



**Landscape L783**  
Near Ivinghoe Beacon, The Chiltern Hills  
18 x 13 cm (7.08 x 5.12 in)



**Landscape L790**  
The Chiltern Hills  
18 x 13 cm (7.08 x 5.12 in)





**Landscape L793**

View from the Escarpment, The Chiltern Hills  
18 x 13 cm (7.08 x 5.12 in)

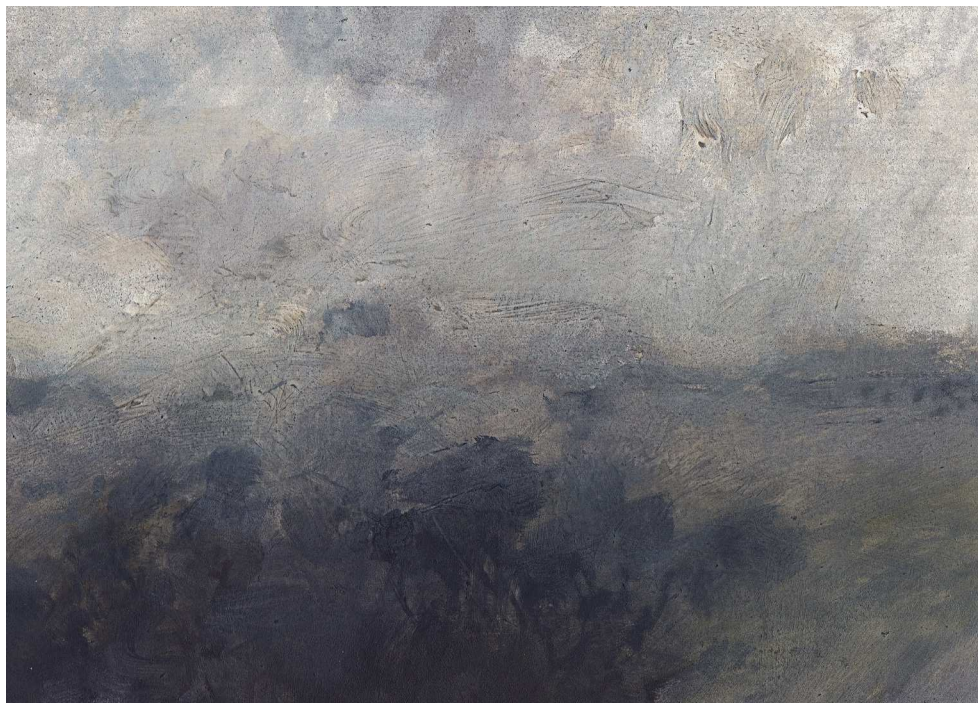


**Landscape L795**  
The Chiltern Hills  
18 x 13 cm (7.08 x 5.12 in)

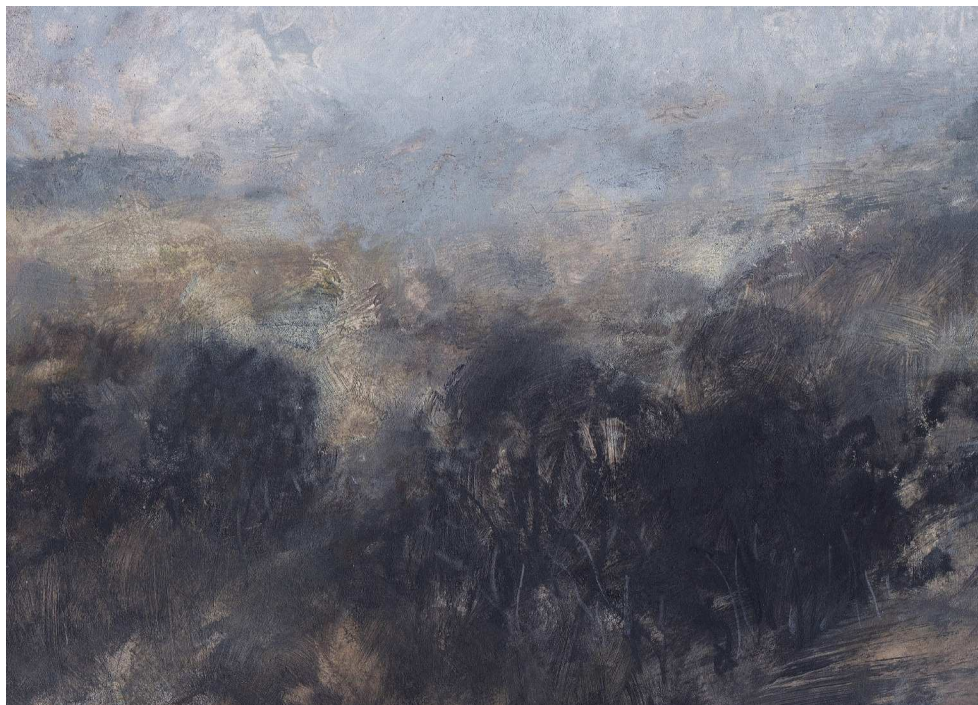




**Landscape L796**  
The Chiltern Hills  
18 x 13 cm (7.08 x 5.12 in)

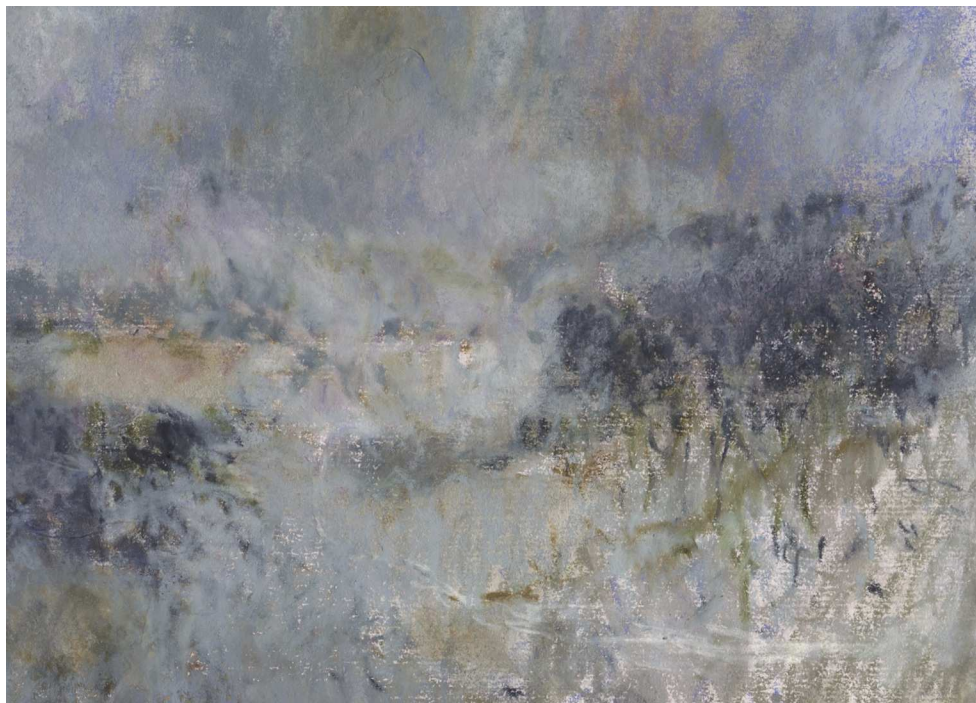


**Landscape L797**  
The Chiltern Hills  
18 x 13 cm (7.08 x 5.12 in)



**Landscape L798**  
Escarpment, The Chiltern Hills  
18 x 13 cm (7.08 x 5.12 in)





**Landscape L805**  
The Chiltern Hills  
18 x 13 cm (7.08 x 5.12 in)



**Landscape L806**  
The Chiltern Hills  
18 x 13 cm (7.08 x 5.12 in)

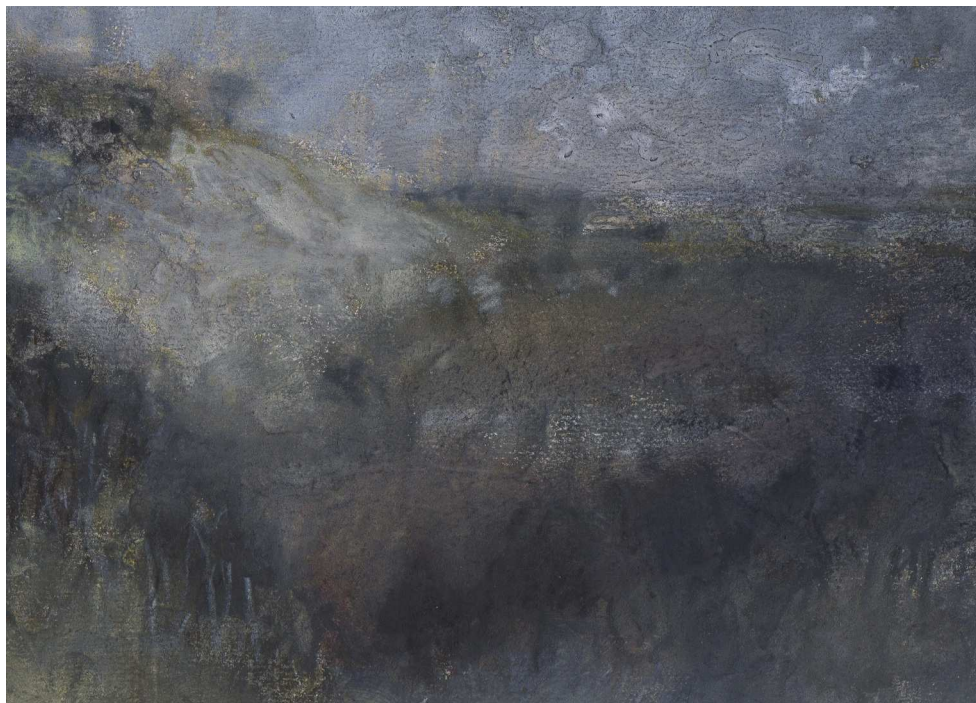


**Landscape L875**  
Woodland, The Chiltern Hills  
18 x 13 cm (7.08 x 5.12 in)



**Landscape L890**  
Near Bison Hill, The Chiltern Hills  
18 x 13 cm (7.08 x 5.12 in)





**Landscape L891**  
Near Bison Hill, The Chiltern Hills  
18 x 13 cm (7.08 x 5.12 in)





**Landscape L900**  
The Chiltern Hills  
18 x 13 cm (7.08 x 5.12 in)



**Landscape L901**  
The Chiltern Hills  
18 x 13 cm (7.08 x 5.12 in)



## Index

### *Page 1*

Landscape L671  
View to a Distant Hilltop,  
The Chiltern Hills  
Mixed media, 2013  
130 x 180 mm (5.12 x 7.08 in)

### *Page 2*

Landscape L680  
View Across the English  
Countryside,  
The Chiltern Hills  
Mixed media, 2013  
180 x 200 mm (7.08 x 7.87 in)

### *Page 3*

Landscape L701  
Distant Rainstorm,  
The Chiltern Hills  
Mixed media, 2013  
180 x 130 mm (7.08 x 5.12 in)

### *Page 4*

Landscape L708  
Wooded Valley and Hillside,  
The Chiltern Hills  
Mixed media, 2013  
208 x 148 mm (8.19 x 5.83 in)

### *Page 5*

Landscape L723  
The Chiltern Hills  
Mixed media, 2013  
208 x 148 mm (8.19 x 5.83 in)

### *Page 6*

Landscape L724  
The Chiltern Hills  
Mixed media, 2013  
244 x 135 mm (7.61 x 5.31 in)

### *Page 7 and Cover*

Landscape L730  
Looking Towards Bison Hill  
from near Ivinghoe Beacon,  
The Chiltern Hills  
Mixed media, 2013  
180 x 130 mm (7.08 x 5.12 in)

### *Page 8*

Landscape L732  
The Chiltern Hills  
Mixed media, 2013  
180 x 130 mm (7.08 x 5.12 in)

### *Page 9*

Landscape L753  
Looking out from The  
Ashridge Estate,  
The Chiltern Hills  
Mixed media, 2013  
180 x 200 mm (7.08 x 7.87 in)

### *Page 10*

Landscape L763  
The Chiltern Hills  
Mixed media, 2013  
210 x 136 mm (8.27 x 5.35 in)

### *Page 11*

Landscape L775  
The Chiltern Hills  
Mixed media, 2014  
180 x 130 mm (7.08 x 5.12 in)

### *Page 12*

Landscape L778  
The Chiltern Hills  
Mixed media, 2014  
200 x 149 mm (7.84 x 5.87 in)

### *Page 13*

Landscape L783  
Near Ivinghoe Beacon,  
The Chiltern Hills  
Mixed media, 2014  
180 x 130 mm (7.08 x 5.12 in)

### *Page 14*

Landscape L790  
The Chiltern Hills  
Mixed media, 2014  
180 x 130 mm (7.08 x 5.12 in)

*Page 15*

Landscape L793  
View from the Escarpment,  
The Chiltern Hills  
Mixed media, 2014  
180 x 130 mm (7.08 x 5.12 in)

*Page 16*

Landscape L795  
The Chiltern Hills  
Mixed media, 2014  
180 x 130 mm (7.08 x 5.12 in)

*Page 17*

Landscape L796  
The Chiltern Hills  
Mixed media, 2014  
180 x 130 mm (7.08 x 5.12 in)

*Page 18*

Landscape L797  
The Chiltern Hills  
Mixed media, 2014  
180 x 130 mm (7.08 x 5.12 in)

*Page 19*

Landscape L798  
Escarpment,  
The Chiltern Hills  
Mixed media, 2014  
180 x 130 mm (7.08 x 5.12 in)

*Page 20*

Landscape L805  
The Chiltern Hills  
Mixed media, 2014  
180 x 130 mm (7.08 x 5.12 in)

*Page 21*

Landscape L806  
The Chiltern Hills  
Mixed media, 2014  
180 x 130 mm (7.08 x 5.12 in)

*Page 22*

Landscape L875  
Woodland,  
The Chiltern Hills  
Mixed media, 2015  
180 x 130 mm (7.08 x 5.12 in)

*Page 23*

Landscape L890  
Near Bison Hill,  
The Chiltern Hills  
Mixed media, 2015  
180 x 130 mm (7.08 x 5.12 in)

*Page 24*

Landscape L891  
Near Bison Hill,  
The Chiltern Hills  
Mixed media, 2015  
180 x 130 mm (7.08 x 5.12 in)

*Page 25*

Landscape L900  
The Chiltern Hills  
Mixed media, 2015  
180 x 130 mm (7.08 x 5.12 in)

*Page 26*

Landscape L901  
The Chiltern Hills  
Mixed media, 2015  
180 x 130 mm (7.08 x 5.12 in)

## Artist's Statement

This series of mixed media landscapes has been inspired by the chalk uplands, wooded hillsides and secluded valleys of the Chiltern Hills. I use my physical and emotional experiences of this area to capture within these works the essence of the landscape, its enduring mass, transient atmospherics and ephemeral qualities of light, as well as to express my own meditative thoughts, personal memories and those subconscious responses that I inevitably take from having been there. Integral to these works are ideas of the ancient, the mythic, the residual, permanence versus impermanence, decay and renaissance. Solitude and exposure are intrinsic conceptual strands within many pieces.

Creating these landscapes is instinctive and intuitive, a direct, visceral engagement. Through a process of mark-making, sedimentation of material, textural surface layering and precisely modulated monochromes, I interpret the fundamentals of the topography, in particular revealing its underlying, elemental nature: ancient, primitive, immovable, timeless, unforgiving. I deliberately use modest materials; a fusion of graphite, pencil, acrylics, gouache, chalk and soluble crayon on paper. My colour palette consists mostly of organic, neutral, desaturated and 'unpretty' pigments, which consciously de-romanticise the finished pieces. When I work materials into the paper, the surface sometimes

degrades and scuffs, adding to the texture and immediacy of the work. I like the feeling of the unprecious and the worn. There is an almost casual rawness in the fact that the paper has to survive the creative process. Sometimes it doesn't. If it does, then, like the landscape, it carries a little of the physical history of its making within itself. I hope these predominantly small, intimate and self-contained landscape compositions invite contemplation and reward prolonged examination and deeper engagement.

*Nicholas Herbert, April 2016.*







Nicholas Herbert (b.1955) is a mixed media artist and designer currently living and working in St Albans, England. From 1974-1978, He studied at the Central School of Art & Design, London, and at the Bath Academy of Art & Design, where he graduated with a first class honours degree in visual communication. During his professional career he has worked across a variety of creative and artistic disciplines, leading to valuable cross-fertilisation and interaction from one area of artistic activity to another. In 1995, he moved to the southern Lakes to pursue an exclusively fine art practice. During this time he made both large-scale paintings on canvas and small landscapes, showing at many galleries in the North of England and participating in a number of Opens, including the University Gallery Newcastle upon Tyne, Middlesbrough Municipal Art Gallery, Castlegate House Gallery, the Coach House Gallery at Brantwood House and the Lyth Gallery. In 1997, he was commissioned to make two series of large works in the Channel Islands. Many of his pieces, including hand-made books of drawings and landscapes, are held in private collections in the UK. Since 2012 he has been developing a new body of work called 'Silent Spaces'. This is a series of small intimate mixed media landscapes on paper informed by his personal experience of the chalk uplands of the Chiltern Hills and combining his interests in the natural landscape, visual mark-making and history.

*April 2016.*



Alan Kluckow Fine Art  
65 Chobham Road  
Sunningdale, Berkshire  
SL5 0DT

+44 (0) 1344 875296  
info@kluckow.com  
www.kluckow.com

Published 2016 © Nicholas Herbert

The moral rights of the contributors have been asserted. All rights reserved. No part of this publication may be reproduced, stored in a retrieval system or transmitted in any form or by any means, whether electronic or mechanical, including photocopying, recording or otherwise, without the prior permission in writing of the artist.



